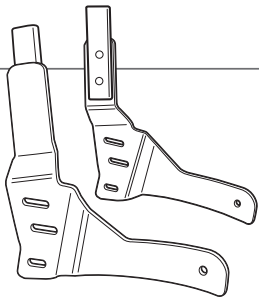


SHAD

BENDA V-302C / V-CRUISER 125 '22- KIT SISSY BAR B0VC32SN

BCN



1 263273 x1 →
263274 x1 ←



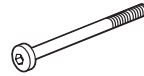
2 H1RC00 x1



3 303045 x20
Ø8



4 260641 x2
Ø16 Ø9 x 22



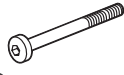
5 304172 x2
M8x70 DIN 7380



6 302024 x4
M8



7 260523 x2
Ø16 Ø9 x 25



8 304170 x2
M8x60 DIN 7380



9 303027 x4
Ø8



10 303020 x4
Ø8



11 304211 x4
M8x15 DIN 933

WARNING!

GB Do not fully tighten the screws until it is ensured that the KIT is correctly attached and aligned. Check tightness every 4 months.

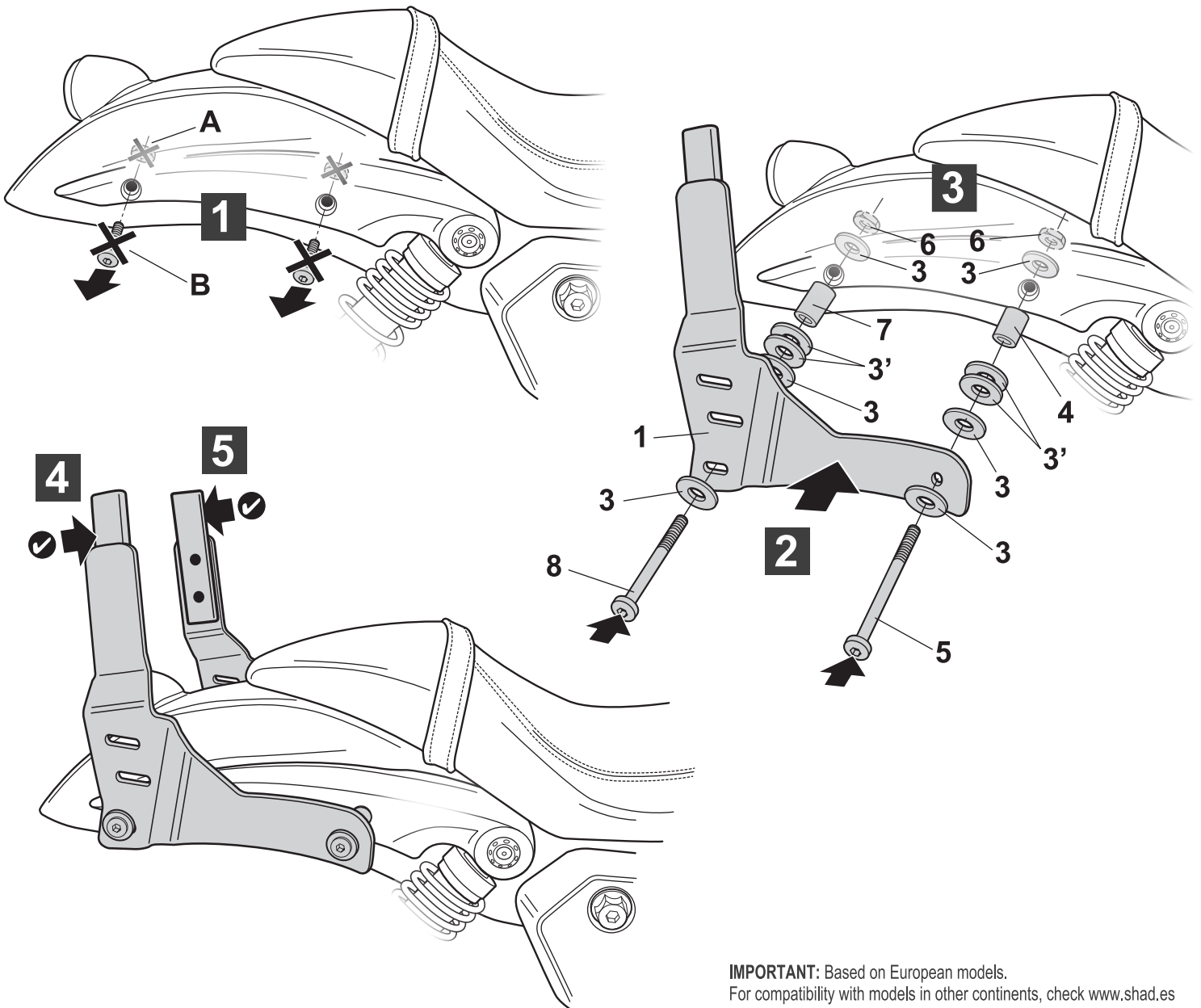
E No apretar los tornillos del todo hasta asegurarse que el KIT está correctamente colocado y alineado. Repasar apriete cada 4 meses.

D Ziehen Sie die Schrauben nicht ganz fest, bevor Sie sich nicht vergewissert haben, daß der Bausatz korrekt eingestellt und ausgerichtet ist. Alle 4 Monate Drehmoment überprüfen.

I Non stringere del tutto le viti fin tanto non si è sicuri che il kit è collocato correttamente e allineato. Controllare il serraggio delle viti ogni 4 mesi.

F Ne pas serrer les vis avant d'être sûr que le KIT soit correctement positionné et ajusté. Vérifier le serrage des vis tous les 4 mois.

ATTENTION: For a full equip assembly, mount the 3P system before the sissybar.



IMPORTANT: Based on European models.
For compatibility with models in other continents, check www.shad.es

