



MODEL YAMAHA MT-10

YEAR 2016 -->

LINE SPORT

MUFFLER ELIMINA KAT / NO KAT

SCHEMATIC

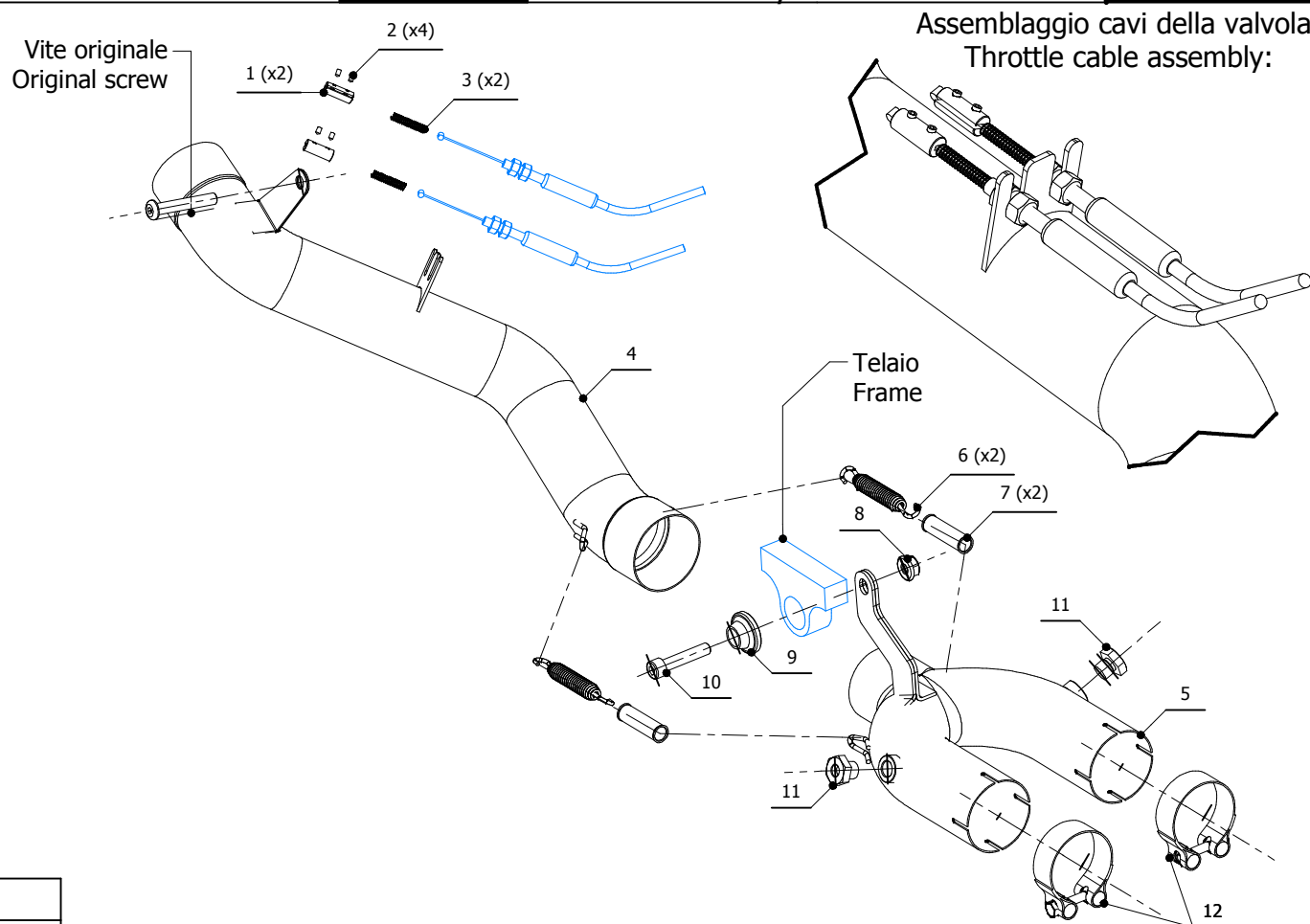
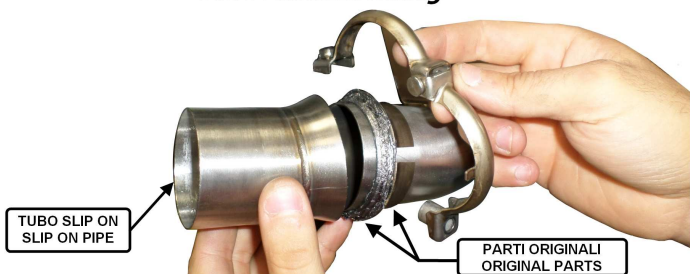
Y.057.C1

Monta sia coi silenziatori MIVV che con lo scarico originale
It fits both MIVV and genuine silencer

MONTAGGIO CON SCARICO ORIGINALE Original exhaust fitting



MONTAGGIO CON TERMINALI MIVV Mivv Exausts fitting



ELENCO PARTI / PARTS LIST

#	QTÀ / QTY	DESCRIZIONE / DESCRIPTION	CODICE / CODE
1	2	Morsetti in alluminio / Aluminium clamps	50.73.138.1
2	4	Grani M3 / Grub screws M3	50.73.140.1
3	2	Molla / Spring	50.73.142.1
4	1	Tubo di raccordo / Link pipe	9773Y057C1B
5	1	Tubo di raccordo 2-1 / Link pipe 2-1	9773Y050C1A
6	2	Molla media / Middle spring	50.73.359.1
7	2	Tubo in gomma per molla / Rubber pipe for spring	50.73.210.1
8	1	Dado M8 flangiato / Flanged nut M8	50.73.393.1
9	1	Rondella in alluminio nera / Black aluminium washer	50.73.221.1
10	1	Vite M8x40 / Screw M8x40	50.73.075.1
11	2	Tappo per sonda lambda / Stopper for lambda probe	50.73.111.1
12	2	Fascetta Ø 52/55 mm / Pipe clamp Ø 52/55 mm	50.FA.008.1

